

Updated Mounting Instructions, May 2005

For the 12" and 15" PowerStations in the following series: PS, PC, PX, PM, and HP

Note These instructions replace those found in the current User Guides for these series.

The PowerStations are designed to be mounted using screws and metal clamps in what is called a bracket assembly. For your convenience, CTC includes all necessary mounting hardware with the unit. See Fig. 1 and Fig. 2.

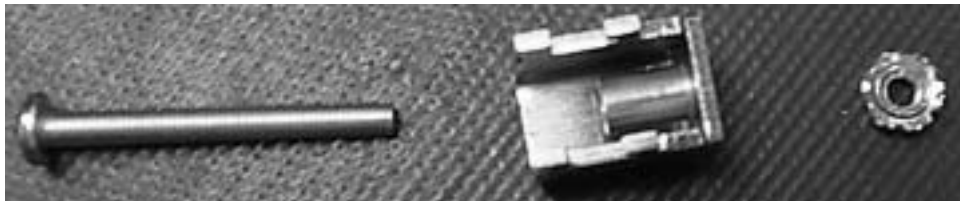


Fig. 1

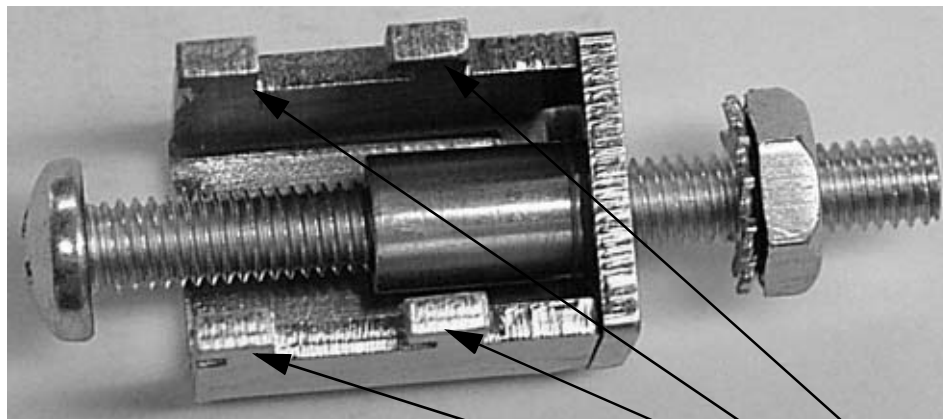


Fig. 2

Mounting clamp feet

To mount the unit, complete the following steps:

1. Insert the PowerStation into the cutout from the front.
2. Attach the mounting clamps, with their screws and nuts, to the back of the unit. See Fig. 3.
3. Insert the clamps into the larger portion of the slots, and then slide them toward the thin portion. You must slide the feet of the mounting clip into the slot, and then slide the clip over to properly mount the unit.
4. Tighten each of the mounting screws against the front of the enclosure. Torque them down to **4 in/lbs.** Tighten the screws in a crosswise sequence to ensure a good seal and prevent damage.
5. Adjust the nut so that it is firmly against the surface of the clamp to prevent loosening.

Tightening the bracket assembly may not ensure that the gasket seal is totally depressed by the bezel. You may see a small gap between the bezel and the enclosure.



Caution Over-tightening the screw/clamp assemblies may damage the PowerStation. Under-tightening may not guarantee a NEMA 4 seal.

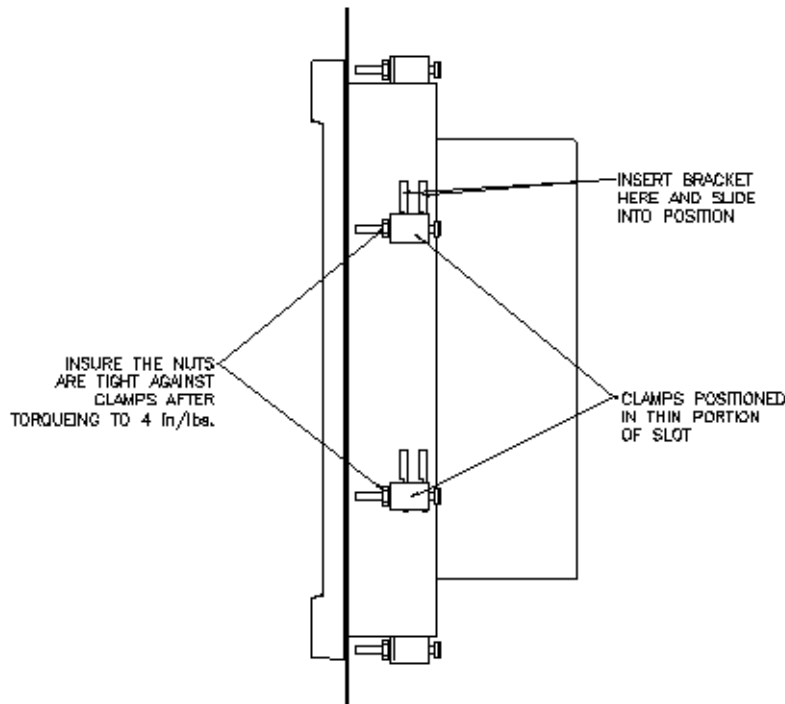


Fig. 3