
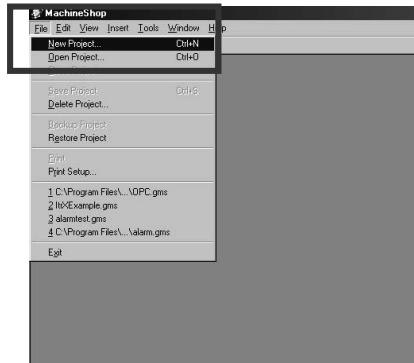


RELEASE NOTE – INTERACTX 1.8

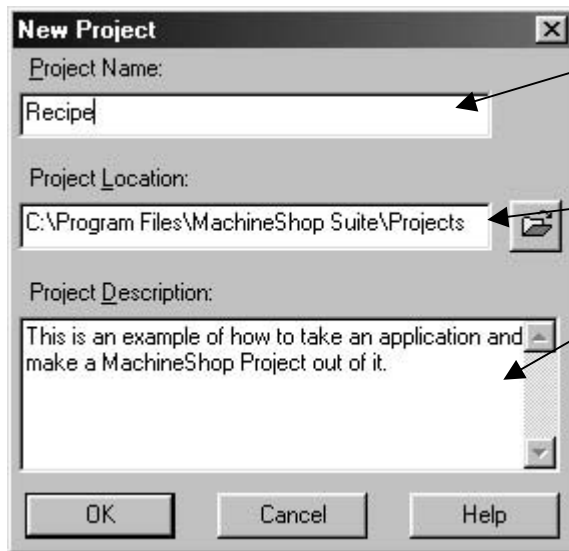
How to Upgrade from an Evaluation Copy of InteractX

It is very easy to upgrade an existing evaluation copy of an InteractX application to a licensed version of InteractX. Essentially, you will be turning the InteractX application into a MachineShop Suite Project. Follow the steps below.

1. The first step is to open up the MachineShop Suite by clicking on the **MachineShop Suite**  icon.
2. Select **File – New Project**, as shown below, or if the Welcome Dialog appears you may select **Create a New MachineShop Project**.



The New Project dialog will appear.



In this box, enter a name that you would like to give to your new project. For this example, we will use *Recipe*.

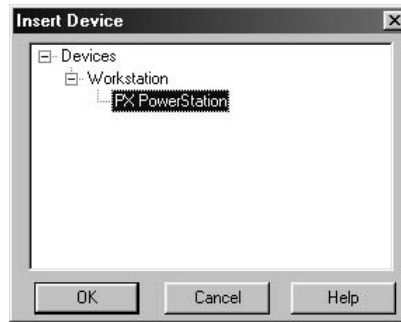
Leave the Project Location at the default.

If you would like, enter a description for the project.

3. Select **OK** to continue.
4. Select **Insert - Device** from the menu bar to add a PX PowerStation to your project.

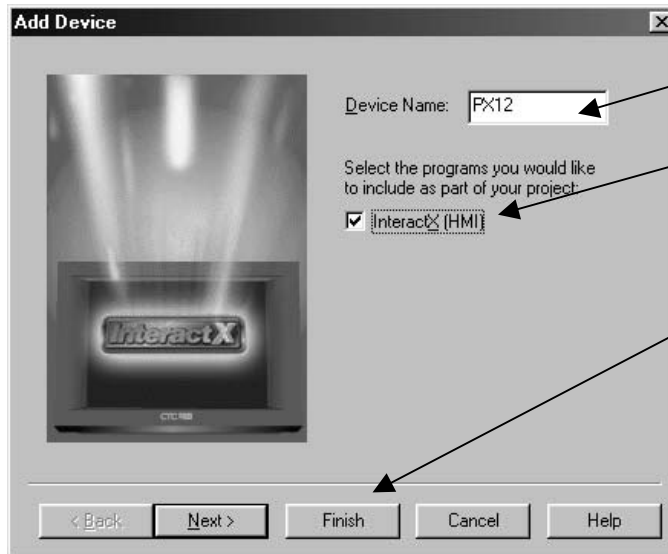


The Insert Device dialog will appear.



- 5. Select **PX PowerStation**, and then select **OK**.

The Add Device dialog will appear.



Enter a **Device Name** and check **InteractX (HMI)**. In this example, we will use *PX12* as the Device Name.

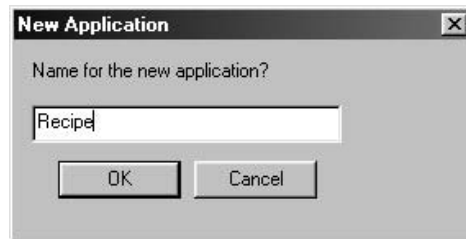
Select **Finish** to complete the setup process.

- 6. From the Project Browser, highlight **InteractX** then select **Insert – New** from the menu bar.

You may also right click on **InteractX** and select **Insert New**.

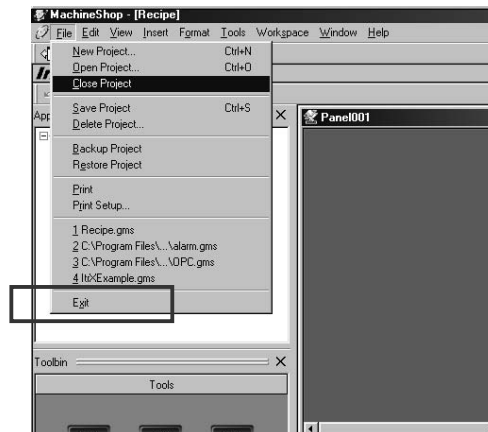


- The New Application dialog will appear. Give the application the same name as the application that you are wanting to copy into this project. For this example, it will be *Recipe*. Select **OK** to continue.

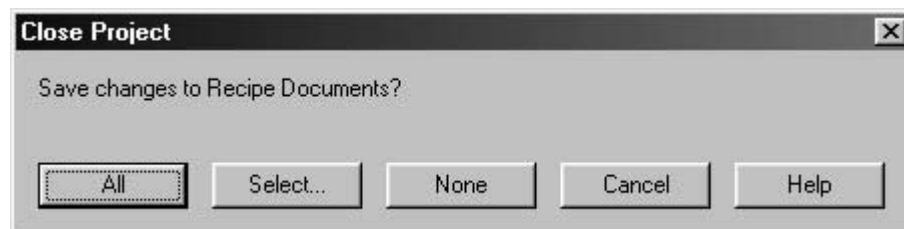


Note: You must give the New Application the same name as the application you are copying!

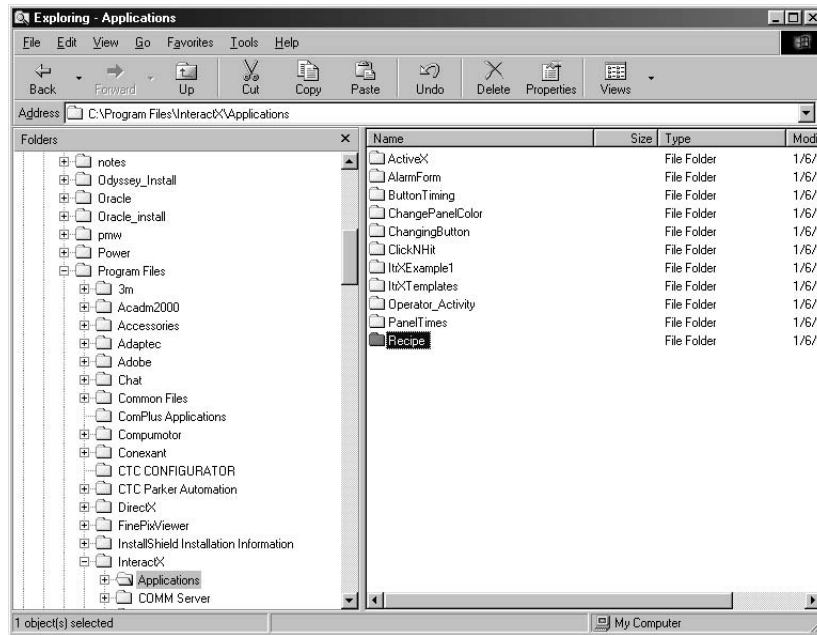
- The new application will open. Close the project by selecting **File - Exit**.



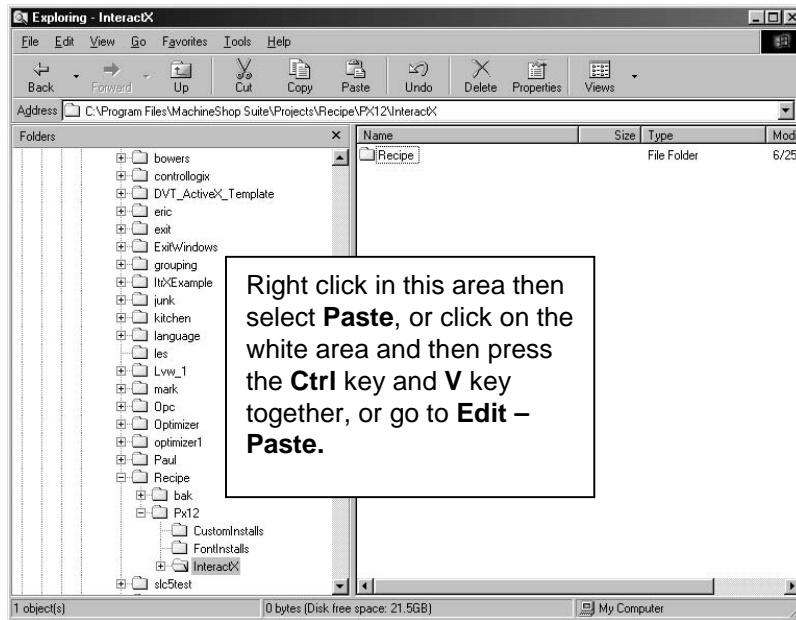
The Close Project dialog will appear. Select **All** to continue.



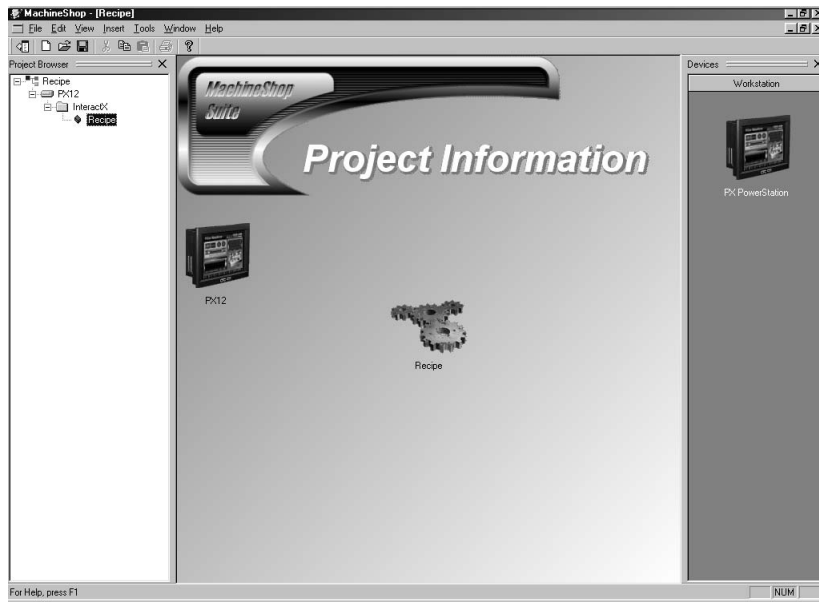
- Open Windows Explorer and browse to the location where your existing Application is located. In this example, it is in *C:\Program Files\InteractX\Applications*, and the application we want to copy is *Recipe*. To copy this we will click on the **Recipe** folder so that it is highlighted, as seen on the next page, and then hold down the **Ctrl** key and **C** key at the same time and it will copy the folder, or you can go to **Edit - Copy**.



- Now change to the folder where the Project that we just created exists. In this example, that will be C:\Program Files\MachineShop Suite\Projects\Recipe\PX12\InteractX. Click in the white area on the right side and press the **Ctrl** key and **V** key together, or select **Edit - Paste**, and the folder that you just copied will be pasted into this location. A pop up will appear that asks if you would like to replace the existing folder and files. Select the **Yes to All** button.



- Close Windows Explorer and open up MachineShop Suite again. Open up your project by selecting **File - Open**, and then selecting your project name. In this example, it would be **Recipe.gms**. Once that is open, you will need to open your application. You can do this by double clicking on the application name.



12. Now the application will open containing all the panels in the original application.

